

## FLASH VECTRON LIGHTNING CABLES



EXTERNAL INSTALLATION



INTERNAL/EXT INSTALLATION



HIGH EXTERNAL INSTALLATION

When the installation of lightning conductor cable placed outside away from building and other installation (electrical and data) or away from the reach of the occupants can use the cable cord BCC (Bare copper conductor) at least 50 mm, with cheap consideration.

Meanwhile, when the anti-lightning conductor cable in put away from the buildings and other installation (electrical, data) or away from the reach of the occupants can use cable NYY 50mm or 70mm cable with consideration enough to with stand lightning induction.

NYA exact same cable with NYY, make into the NYY cable that has two insulators or two layers of copper wrapping, wrapping one layer while the NYA or the insulator.

And when the path installation can not keep it away from other installation (electrical, data, control, etc) then the cable that can withstand voltage breakdown/induction (inception voltage) flow lightning, for example N2XSJ Coaxial cable and 2x35mm.

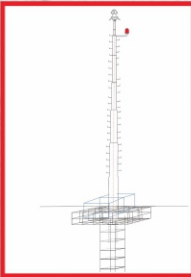
## SURGE ARRESTER CABLE



NYAF 16mm cable is usually used in the installation of internal protection (surge Arrester Power), because in addition to bending this cable also has an insulator or wrapping copper, unlike cable BC. Even installation is also highly recommended to wear conduit. In terms of installation must be connected to the grounding cable that typically use 50mm BC cable or connected directly to Ground Rod.

In the installation of internal protection (Surge Arrester PABX) Used to use a regular telephone wires, generally type of coaxial cable used in small in size. This of course adapted to the use of its PABX installation on the cable. If you have installed the cable should remain connected to the grounding system, installation so that it can function optimally.

## MONOPOLE LIGHTNING ROD



Monopole can be used as an option Lightning Construction pole, from of construction is ideal for securing hilly areas or wide area air.

Ideal function of monopole is focused bolt of lightning in the lightning channel point, because with the sharpening of a static object then charge the earth will be more focused on the end, of course it is ideal for electrostatic lightning rod, lightning rod because utilizing electrostatic energy the system work.

This type of construction has the technical term ranging from monopole single pole free standing, which is clearly the form that this construction standing upright without any support, either in the form of pipe or still wire/sling, the form can be pipe (round) or polygon.

Materials with it is possible to make a single pillar/monopole is plumbing, galvanized, stainless steel, schedule with a minimum thickness of 4mm when the bottom of the pipe will make the pole as high as +/- 20 mtr. of follow the pole height to be made should the higher thick (more than 4mm).

www.pusatantipetr.com



www.pusatantipetr.com



# FLASH VECTRON®

Lightning Protection System

Early Streamer Emission (ESE)  
No Power Supply or Solar Cells  
No Radioactive  
Discharge Current 300 kA  
Protection Radius 85-150 Meter

Scan me



Distributor :

**PT VISIOTEK GLOBAL INDONESIA**

Jl. Pangeran Jayakarta No.65 RT.005/RW.001, Kel. Harapan

Mulya, Kec. Medan Satria, Kota Bekasi

Mobile : 0812 8383 1134, 0815 7447 9960

Phone : 021 8895 8318 Fax : 021 8895 8321

www.pusatantipetr.com



www.pusatantipetr.com

## ABOUT FLASH VECTRON

### FLASH VECTRON LIGHTNING PROTECTION SUPREMACY

Flash vectron lightning protection is an electrostatic lightning rod, ESE based on and designed exceptional Tropical Zone like Indonesia Country.

1. Designe by Indonesin lightning engineer and Germany architect,
2. Secure Terminal Unit,
3. Free Maintenance,
  - No Power Supply or solar cells
  - No Radioactive
  - Discharge Current 300 KA
4. More Practice ,designed easily for instalation in ground,
5. Highly material,
  - SNI & IEC Standart
6. More Economic and Affordable Value,
7. Current Tecnologic (Exceptional Tropical Zone)
8. Trustworthy Prodsen
  - Local Production Company Lightning\_Rod Cooperate with Germany Company

**FLASH VECTRON** lightning protection system is a system designed to proteca a structure from damage due to lightning strikes by intercepting such strikes and safely passing their extremely high voltage current to "ground". Flash Vectron Lightning Protection designed to provide a low resistance path to ground for potential strikes.

### RECOMENDATION

- a. Certification Flash Vectron Lihgtning Protection
- b. 3 (Three) year Warranty
- c. Labor Department letter
- d. State Electricity Firm and - Indonesian LMK

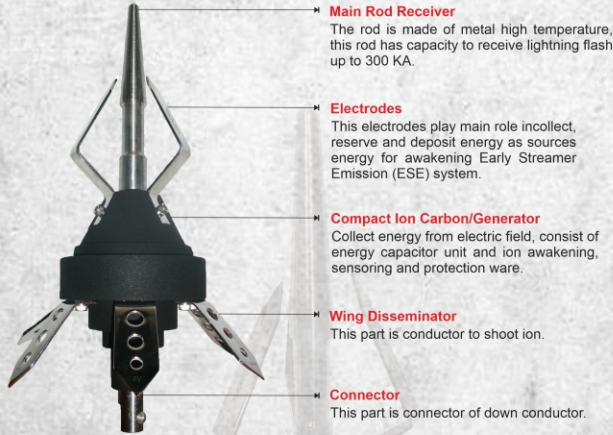
### OBJECTIVITY

- a. Building
- b. Industry Area
- c. Factory
- d. Entrepot
- e. Huge Electronic Tools/Transmitter



www.pusantipetr.com

## FLASH VECTRON DETAIL



**Main Rod Receiver**  
The rod is made of metal high temperature, this rod has capacity to receive lightning flash up to 300 KA.

**Electrodes**  
This electrodes play main role incollect, reserve and deposit energy as sources energy for awakening Early Streamer Emission (ESE) system.

**Compact Ion Carbon/Generator**  
Collect energy from electric field, consist of energy capacitor unit and ion awakening, sensing and protection ware.

**Wing Disseminator**  
This part is conductor to shoot ion.

**Connector**  
This part is connector of down conductor.

### Operating System

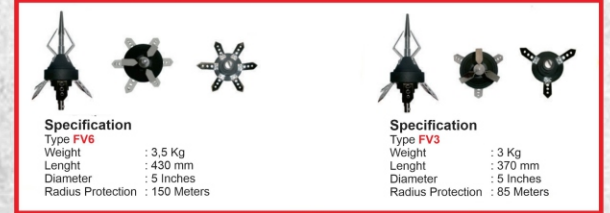
In the mean time a flock of cloud flow and approach the top of building which has been protected by lightning protection **Flash Vectron**. The electro thees attached in the equipment collect and deposit energy from electrical cloud and electric field. In the capacitor unit after refillin has been adequate the flown to the ion generation. In the same time plenty of atmshpheric electrical energy among the cloud inform ion generator. This information then managed by ion generator as a trigge to discharge the energy. This triggering will result streamer leader from central pick up rod

Laboratorium Test  
HAMBURG LABORATORY, Inc.  
Pine Street Hamburg PA 19521



www.pusantipetr.com

## FLASH VECTRON TYPE



### Specification

Type FV6  
Weight : 3,5 Kg  
Lenght : 430 mm  
Diameter : 5 Inches  
Radius Protection : 150 Meters

### Specification

Type FV3  
Weight : 3 Kg  
Lenght : 370 mm  
Diameter : 5 Inches  
Radius Protection : 85 Meters

Lightning strike occur of the change of electrical load (negative charge) from the cloud to the surface of the ground, chose the highest object that containing electrical load (positive charge). We can see "Step leader" lightning strike, it is like a glowing lines on the sky. Effect from the lightning strike can cause very serious damages to building, occupants and electrical Equipment.

**Flash Vectron** is the pioneer of lightning conductor electrostatic system from indonesia, have a large protection area, efficient an low maintenance (Flash Vectron use existing power from negative charge of the grounding system).

TABLE RADIUS PROTECTION HIGH RISK  
12 Meters of Top Structure Building

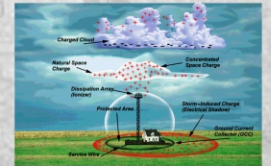
HIGH	3M	4M	5M	6M	7M	8M	9M	10M	20M
FV3	53	62	69	76	82	88	93	98	139
FV6	76	88	98	108	116	124	132	140	197

TABLE RADIUS STANDARD PROTECTION  
12 Meters of Top Structure Building

HIGH	3M	4M	5M	6M	7M	8M	9M	10M	20M
FV3	67	78	87	95	103	110	117	123	174
FV6	95	110	123	135	146	157	166	175	247

### Protection Shape

Protection Shape of this Flash Vectron as similiar with cage (look at figur below) so everthing under and inside of the cage will be safe from direct lightning flash.



www.pusantipetr.com